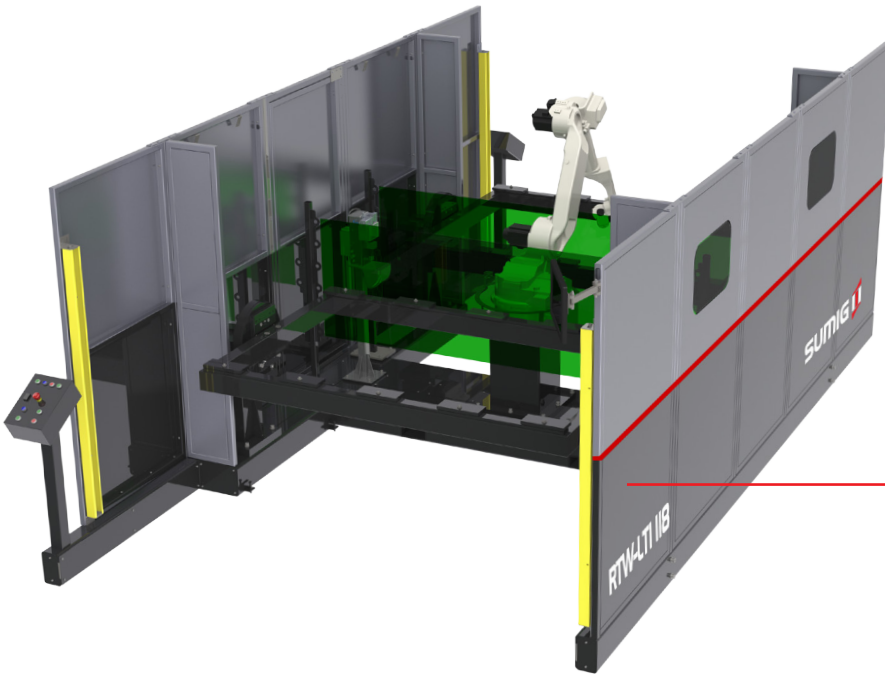




## Ready to Weld



*Quick installation and ready to weld model with monitored maintenance door*

*Rigid base with optimized working area, easy to move*

*Designed for high productivity with big lots*

*Easy integration with any robot brand and welding inverter.*



Cell has machined tables with guide bushes for positioning and 01 (one) workstation with safety relays in compliance with ANSI/RIA 15.06 Standard.

**Ready-To-Weld robotic welding** system offers the best cost benefit ratio. Designed for welding of medium size parts and where shop space maybe an issue. Increase your productivity easily and quickly, allowing an easy integration with any robot brand and power-source.

<b>Tabletop dimensions</b>	39" x 118"
<b>Maximum table load capacity</b>	2204 lb
<b>Maximum cell power requirements</b>	66A
<b>Input Voltage/Current</b>	200V to 240V (three-phase)
<b>Cell Dimensions</b>	185" L x 244" W x 83" H
<b>Weight</b>	7540 lb
<b>Power requirement</b>	26 kVA (according to welding robot and inverter)
<b>Air Requirements/Flow Rate</b>	87 Psi/0.59 Cfm

**All inclusive Package**



+

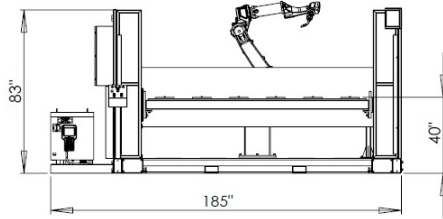


+

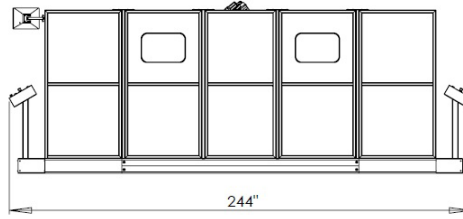


## Measures

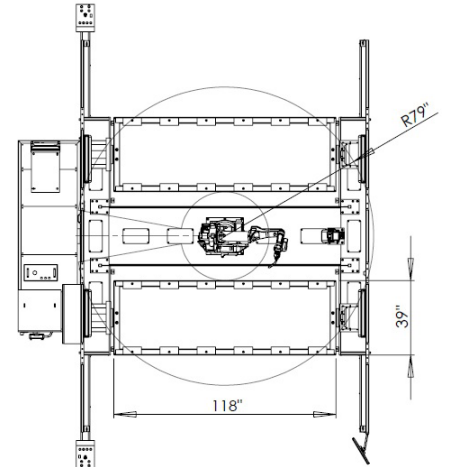
---



Front



Side



Working Area

## Standard Components

---



6 axis



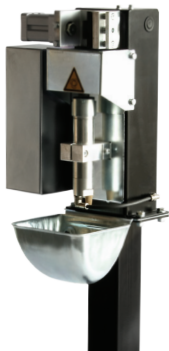
400 Amp Inverter



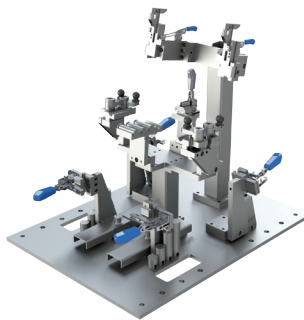
400 Amp Air Cooled Torch with Safety Clutch

## Optionals

---



Torch Cleaner and Wire Cutter Unit



Tooling



Neuron-S Adapt



**SUMIG USA CORPORATION**  
8600 Commodity Circle #159  
Orlando, FL 32819

☎ +1 800 503 9717  
🌐 [www.sumigusa.com](http://www.sumigusa.com)  
✉ [sumigusa@sumig.com](mailto:sumigusa@sumig.com)